

ENA  cem^z

SELF CURING
CEMENT FOR
ZIRCONIA

ADHESION: **3** SAFE
OPTIONS

ENA  bond[®]



ONE-BOTTLE

COSM300

ENA BOND ONE-BOTTLE ADHESIVE
Ena Bond light curing Bonding 5 ml
Ena Etch Phosphoric acid 37% 2 ml
Accessories

Refill

COSM300A Ena Bond light curing Bonding 5 ml
COSM300D Ena Bond catalyst 5 ml
COSM101B Ena Etch Phosphoric acid 37% 29 ml

TWO-BOTTLE

COSM300K

ENA BOND TWO-BOTTLE ADHESIVE
Ena Bond light curing Bonding Primer 5 ml
Ena Seal light curing resin 5 ml
Ena Etch Phosphoric acid 37% 2 ml
Accessories

Refill

COSM300A Ena Bond light curing Bonding 5 ml
COSZ10 Ena Seal light curing resin 5 ml

SELF-ETCHING

CFOTK

ENA BOND SE SELF-ETCHING ADHESIVE
Ena Bond SE Primer 5 ml
Ena Bond SE light curing resin 5 ml
Ena Etch Phosphoric acid 37% 2 ml
Accessories

CFOT

ENA BOND SE SELF-ETCHING ADHESIVE
Ena Bond SE Primer 5 ml
Ena Bond SE light curing resin 5 ml

Refill

CFOTP Ena Bond SE Primer 5 ml
CFOTS Ena Bond SE light curing resin 5 ml



Micerium S.p.A.
Via G. Marconi, 83-16036 Avegno (GE) Italy
Tel. (+39) 0185 7887 870 • Fax (+39) 0185 7887 970
hfo@micerium.it • www.micerium.com

File: ENABond Colonia ENG v1 03-2013

ENA BOND



ADHESION: 3 SAFE OPTIONS

ETCH & RINSE

ONE-BOTTLE

- Aesthetics & Retention
 - Fluorescent as natural tooth
 - Ethanol based special composition
 - Dual catalyst used with dual composite
 - **Bond strenght values over the average industry: 30 Mpa***
- * Test made by University of Chieti - Prof. Camillo D'Arcangelo



ETCH & RINSE

TWO-BOTTLE

IV generation two-bottle adhesive
 You can get great adhesion results and a perfect seal by using Ena Bond as a primer and Ena Seal as second layer of unfilled adhesive resin; Ena Bond becomes a two-bottle adhesive system

- **Excellent adhesion values on dentine: 24 Mpa***
- * Test made by University of Chieti - Prof. Camillo D'Arcangelo

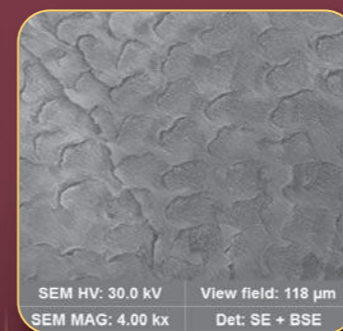


ENA  bond®

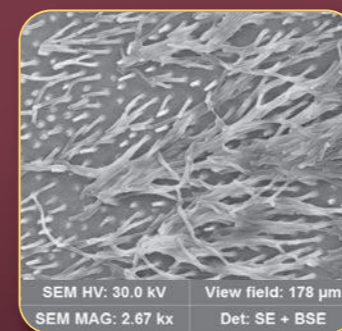
3 SELF ETCHING

- **Bond strenght values over the average industry*:**
 - 24 Mpa on dentine
 - 17 Mpa on no-etched enamel
 - 20 Mpa on etched enamel
- **Special composition in water solution**

* Test made by University of Chieti - Prof. Camillo D'Arcangelo, in comparison with two other self-etching adhesive systems with Primer (see diagram)



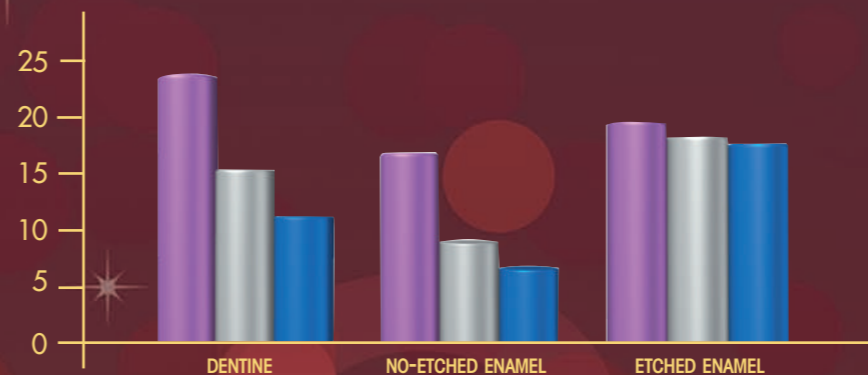
ENAMEL



DENTINE

Treated Enamel and dentine with Ena Bond SE (images at electron microscope SEM)

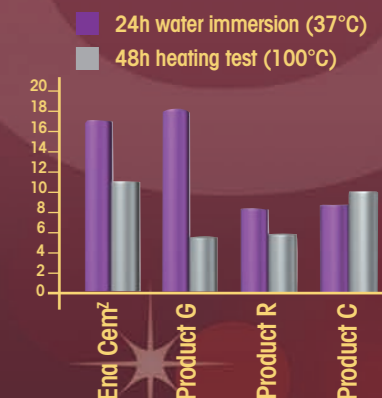
The microscopy shows the enamel surface and the "resin-tags" that put in evidence the penetrations of Ena Bond SE in dentine tubules (Prof. Vassilios Kaitsas).



ENA  cem^z

SELF CURING CEMENT FOR ZIRCONIA

Special cement for luting of zirconia prosthodontic appliances both on natural teeth and on implants



CPCZK Ena Cem^z for zirconia Introductory Kit:
 Self curing cement 8 g
 Primer 5 ml

CPCZ Ena Cem^z for zirconia Self curing cement 8 g

CPCZP Ena Cem^z for zirconia Primer 5 ml